

LATCHES

PAWL/CAM ACTION

SLIDE BOLTS

- Easy, intuitive action.
- Supplied with surface and mortise keepers.
- Mounting hardware is included.

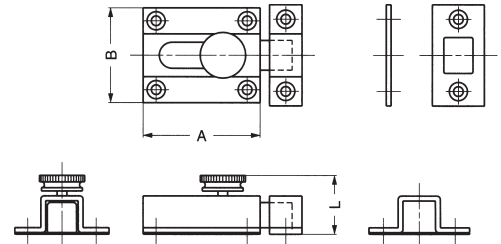
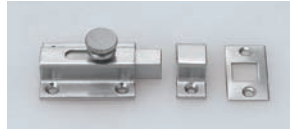
BRASS & STAINLESS

KNOB STYLE

BRASS

- Knurled knob for easy grip

Material: Brass
Finish: Satin nickel



| PART NUMBER | PRIMARY DIMENSIONS | | |
|-------------|--------------------|------------|-------------|
| | LEGNTH "A" | WIDTH "B" | HEIGHT "L" |
| SBL-35 | 36 (1.42") | 29 (1.14") | 18 (.71") |
| SBL-45 | 45 (1.77") | 30 (1.18") | 18.5 (.73") |

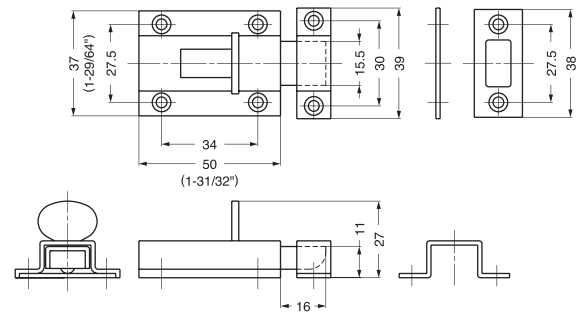
TAB STYLE

- Easy to activate

Material: 304 stainless steel
Finish: Satin



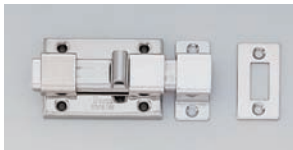
PART NUMBER
KR-50



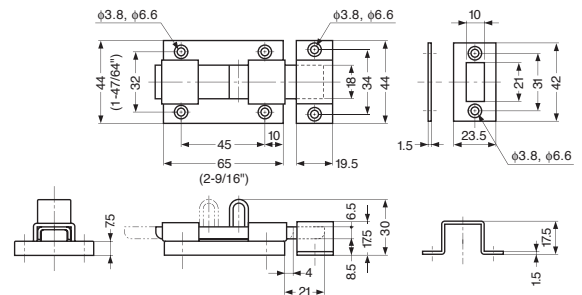
ROUNDED TAB

- No snag design

Material: 304 stainless steel
Finish: Polished



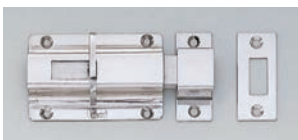
PART NUMBER
KR-65



WING TAB

- Wing drapes over latch channel

Material: 304 stainless steel
Finish: Polished



PART NUMBER
KR-75

